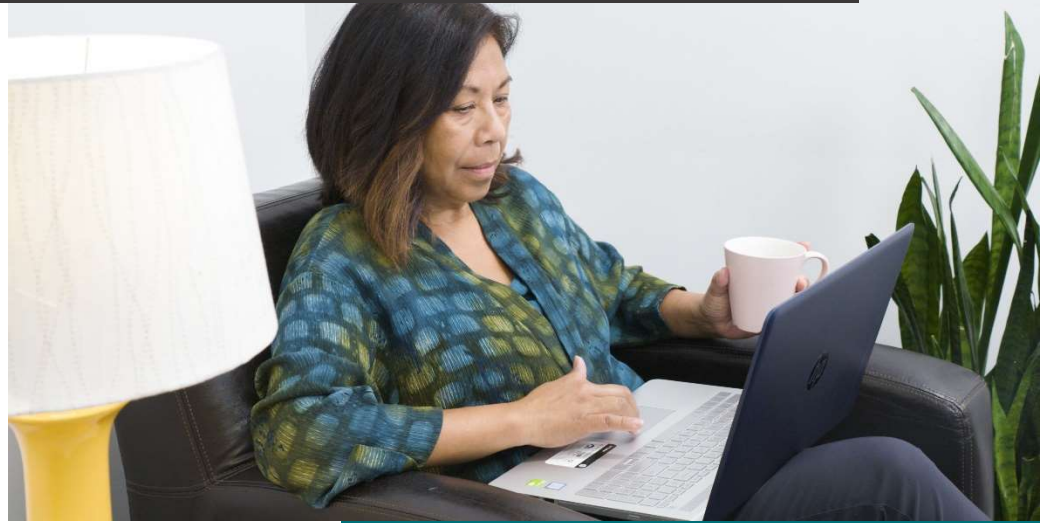




Online Class Catalog



Powered by Relias

ABOUT OREGON CARE PARTNERS

Established in 2014, **Oregon Care Partners**' mission is to help professional and family caregivers improve the lives and care for aging Oregonians by providing access to no-cost, high quality trainings in all corners of the state. Funded by the State of Oregon, Oregon Care Partners offers trainings in collaboration with many statewide long-term care and non-profit organizations who share a vision and concern for the quality of life and care of aging Oregonians. These partnerships, pooled resources and expertise allow us to reach more caregivers than a single organization could reach alone.

For more information, please visit OregonCarePartners.com.

HOW TO REGISTER

Anyone living or working in Oregon can create an account and register for Oregon Care Partners' in-person, webinar and online classes. Trainings have been designed specifically to support family caregivers and care professionals who provide care, services, support, and resources to older adults through state, local and private long-term care and health systems including first responders.

Please register at OregonCarePartners.com.

For assistance, please call our Support Team at 1-800-930-6851 toll free or email us at info@oregoncarepartners.com.

CONTINUING EDUCATION UNIT CREDITS (CEUS)

Oregon Care Partners is an automatically approved sponsor for Assisted Living and endorsed Memory Care administrator and Adult Foster Home Aging and People with Disabilities, Adult Mental Health, and Developmental Disability provider credits by the Oregon Department of Human Services, Safety, Oversight, and Quality Unit.

Oregon Care Partners trainings are approved for Residential Care and Nursing Home administrator credits in accordance with the Oregon Health Licensing rule Chapter 853, Division 50, CEU domains.

If you are unsure whether an Oregon Care Partners class qualifies for CEUs for your license type, please check with your licensing authority for acceptable CEU requirements.

Activities for Meaningful Care	<u>Duration</u>	<u>CEUs</u>
Activities for People Living with Dementia	1 hour	1.0
Activities: Where the Action Is	30 min	0.5
Alzheimer's Disease and Related Disorders: Activities	1 hour	1.0
Alzheimer's Disease and Related Disorders: Psychosocial Care	1 hour	1.0
Alzheimer's and Dementia: Positive Approach to Care®/Teepa Snow		
The Art of Caregiving	2 hours	2.0
Challenging Behaviors in Dementia Care	2.5 hours	2.5
Creating Quality of Life in Dementia Care	2.5 hours	2.5
The Journey of Dementia	3 hours	3.0
Living at Home with Mid to Later Stage Dementia	1.5 hours	1.5
Progression of Dementia: Seeing GEMS® Not Just Loss	2 hours	2.0
Teepa Snow: Meaningful Activities	15 min	0.25
Teepa Snow: Music	15 min	0.25
Teepa Snow: Seeing it from the Other Side Chapter 1: 3 Responses to Dementia	45 min	0.75
Teepa Snow: Seeing it from the Other Side Chapter 2: The Caregiver Agenda	15 min	0.25
Teepa Snow: Seeing it from the Other Side Chapter 3: Normal Aging	1 hour	1.0
Teepa Snow: Seeing it from the Other Side Chapter 4: What's Not Normal	30 min	0.5
Teepa Snow: Seeing it from the Other Side Chapter 5: The Right & Left Brain	45 min	0.75
Teepa Snow: Seeing it from the Other Side Chapter 6: Determining Dementia	30 min	0.5
Teepa Snow: Seeing it from the Other Side Chapter 7: The Umbrella of Dementia	30 min	0.5
Teepa Snow: Seeing it from the Other Side Chapter 8: Brain Failure	30 min	0.5
Teepa Snow: Seeing it from the Other Side Chapter 9: Teepa's GEMS®	30 min	0.5
Teepa Snow: Seeing it from the Other Side Chapter 10: Positive Physical Approach	45 min	0.75
Teepa Snow: Seeing it from the Other Side Chapter 11: Hand-under-Hand Technique	30 min	0.5
Teepa Snow: Seeing it from the Other Side Chapter 12: Thrive to Survive	45 min	0.75
Teepa Snow: Seeing it from the Other Side Chapter 13: Changing Habits	45 min	0.75



Alzheimer's and Dementia: Positive Approach to Care®/Teepa Snow	<u>Duration</u>	<u>CEUs</u>
Teepa Snow: Seeing it from the Other Side Chapter 14: Eating with Hand-under-Hand	15 min	0.25
Teepa Snow: Seeing it from the Other Side Chapter 15: Challenging Behaviors	30 min	0.5
Care for the Caregiver		
Dementia Care: Caregiver Self-Care	10 min	0.1
Stress Management for the Caregiver	1 hour	1.0
Challenging Behaviors		
Alzheimer's Disease and Related Disorders: Behavior and ADL Management	1 hour	1.0
Alzheimer's Disease and Related Disorders: Behavior Management	1 hour	1.0
Caring for Persons with Dementia - Behaviors and Communication	1 hour	1.0
Client Rights & Ethics		
Alzheimer's Disease and Related Disorders: Family and Ethical Issues	1 hour	1.0
Ethics and the Care of Persons Living with Dementia	1 hour	1.0
Health Insurance Portability and Accountability Act and Client Rights	1 hour	1.0
Protecting Resident Rights in Assisted Living Facilities	1 hour	1.0
Protecting Resident Rights in Nursing Facilities	1 hour	1.0
Communication Strategies		
Alzheimer's Disease and Related Disorders: Communication	1 hour	1.0
Be There: People Come First	1 hour	1.0
Communication and People with Dementia	1 hour	1.0
Effective Communication Skills	1 hour	1.0
Cultural Awareness		
Cultural Diversity and the Older Adult	1.25 hours	1.25
Cultural Competence and Humility in Palliative Care	1.25 hours	1.25
Respecting Diversity: Residents, Staff and Families	1 hour	1.0
Understanding Cultural Differences in the Senior Population	1 hour	1.0
Working More Effectively with the LGBTQ+ Community	2 hours	2.0



Daily Care	Duration	CEUs
A Day in the Life of Henry: A Dementia Experience	15 min	0.25
Alzheimer's Disease and Related Disorders: Activities of Daily Living	1 hour	1.0
Assessing and Managing Pain	1 hour	1.0
Assisting with Personal Care	1 hour	1.0
Assisting Residents with Activities of Daily Living	2 hours	2.0
Body Systems and the Aging Process	1 hour	1.0
Caring for Persons with Dementia: ADLs, Nutrition and Hydration	1 hour	1.0
Common Ambulatory Aids	1 hour	1.0
Dementia Care: Bathing	1 hour	1.0
Dementia Care and Co-morbidities	30 min	0.5
Elimination and Toileting	1 hour	1.0
First Aid	30 min	0.5
Encouraging Client Independence	1 hour	1.0
Proper Positioning	1 hour	1.0
Wheelchairs and Other Ambulatory Aids	1 hour	1.0
Environment		
Alzheimer's Disease and Related Disorders: The Physical Environment	1 hour	1.0
Environment: Creating a Sense of Calm	1 hour	1.0
Environment: Routines and Consistency for Comfort	1 hour	1.0
Elder Abuse Prevention		
Elder Abuse Prevention, Investigation and Reporting	2 hours	2.0
Emergency Preparedness (Professionals)		
Emergency Preparedness Regulations	1.5 hours	1.5
Fire Safety and Emergency Preparedness	2 hours	2.0
Natural Disasters and Workplace Emergencies: An Overview	30 min	0.5
Fall Prevention		
Exercise and Fall Prevention in Seniors	1 hour	1.0
Identifying Fall Risk in Assisted Living	1 hour	1.0
Understanding Falls in the Home	30 min	0.5

Health Service Operations (Professionals)	<u>Duration</u>	<u>CEUs</u>
Monitoring Changes of Condition	1 hour	1.0
Observation, Reporting and Recording	1 hour	1.0
Service Plans for Assisted Living Facilities	1 hour	1.0
Infection Prevention and Control		
Infection Control and Prevention	1 hour	1.0
Mental Health Care & Trauma Informed Care		
Depression and Suicide in Older Adults	1 hour	1.0
Older Adults and Behavioral Health Issues	1.5 hours	1.5
Psychosocial Issues	1 hour	1.0
Substance Use Disorders and Treatment	1 hour	1.0
About Trauma Informed Care	1 hour	1.0
Understanding Mental Illness	30 min	0.5
Nutrition & Hydration		
Dementia Care: Nutritional Goals and Approaches	1 hour	1.0
Managing Nutritional Status - Malnutrition and Dehydration	1 hour	1.0
Understanding Nutrition and Hydration	45 min	0.75
Nutrition and Hydration at the End of Life	45 min	0.75
Palliative Care		
Advanced Care Skills in Late-Stage Dementia	2 hours	2.0
Care Planning: Preparing for End of Life	30 min	0.5
Discussions about Grief, Loss, Death and Dying	1 hour	1.0
End of Life Care & Letting Go	2 hours	2.0
End of Life Care and Treatments	1 hour	1.0
End of Life Cultural Considerations: Religion and Spirituality	1.25 hours	1.25
Hospice Care vs. Palliative Care	1.5 hours	1.5



Person-Centered Care	Duration	CEUs
Introduction to Person-Centered Care in Assisted Living	1 hour	1.0
Let's Get Real: Being Person-Centered in a Task Oriented World	1 hour	1.0
Person-Centered Care Planning for People Living with Dementia	1 hour	1.0
Pre-Service Dementia Care Training (Professionals)		
Pre-Service Dementia Care Training for Direct Care Staff	6 hours	6.0
Safe Medication Management		
Alzheimer's Disease and Related Disorders: Medical Care	1 hour	1.0
Assisting with Medication Administration	1 hour	1.0
Assisting with Self-Administration of Medications: The Basics	1 hour	1.0
Assisting with Self-Administration of Medications: Guidelines	1 hour	1.0
Assisting with Self-Administration of Medications: Medication Orders	1 hour	1.0
Basics of Medication Management	1 hour	1.0
Documenting Medications	1 hour	1.0
Medication Management: PRN Meds	1 hour	1.0
Medications and Dementia	1 hour	1.0
Polypharmacy, Adverse Drug Reactions, and Drug Calculations	1 hour	1.0
Providing Medication Assistance	1 hour	1.0
Safely Monitoring the Medication	1 hour	1.0
Sexuality and Capacity to Consent		
Aging and Sexuality: For LTC Professionals	1.5 hours	1.5
Sexuality and Persons with Dementia	30 min	0.5
Signs & Symptoms of Alzheimer's and Dementia		
Alzheimer's Disease and Related Disorders: An Overview	1 hour	1.0
Dementia Care: Hallucinations and Delusions	1 hour	1.0
Dementia Care: Understanding Alzheimer's Disease	30 min	0.5
Help is Here: When a Resident Has Dementia	3.5 hours	3.5
Understanding Alzheimer's Disease	1 hour	1.0
Understanding Dementia	1 hour	1.0
Understanding Wandering and Elopement	45 min	0.75
Transitions		
Managing Transitions of Care	1 hour	1.0



SUGGESTED TRAINING PLANS

Diversity and Inclusion	<u>Duration</u>	<u>CEUs</u>
Cultural Diversity and the Older Adult	1.25 hours	1.25
Cultural Competence and Humility in Palliative Care	1.25 hours	1.25
Respecting Diversity: Residents, Staff and Families	1 hour	1.0
Understanding Cultural Differences in the Senior Population	1 hour	1.0
Working More Effectively with the LGBTQ+ Community	2 hours	2.0
Intro to Health Service Operations (Professionals)		
Effective Communication Skills	1 hour	1.0
Identifying Fall Risk in Assisted Living	1 hour	1.0
Monitoring Changes of Condition	1 hour	1.0
Observation, Reporting and Recording	1 hour	1.0
Protecting Resident Rights	1 hour	1.0
Providing Medication Assistance	1 hour	1.0
Service Plans for Assisted Living Facilities	1 hour	1.0
Life Enrichment and Social Engagement		
Activities for People Living with Dementia	1 hour	1.0
Alzheimer's Disease and Related Disorders: Psychosocial Care	1 hour	1.0
Activities: Where the Action Is	30 min	0.5
Creating Quality of Life in Dementia Care	2.5 hours	2.5
Aging and Sexuality: For LTC Professionals	1.5 hours	1.5
Let's Get Real: Being Person-Centered in a Task Oriented World	1 hour	1.0
Teepa Snow: Meaningful Activities	15 min	0.25

SUGGESTED TRAINING PLANS

Mental Health Care for Older Adults	<u>Duration</u>	<u>CEUs</u>
Depression and Suicide in Older Adults	1 hour	1.0
Let's Get Real: Being Person-Centered in a Task Oriented World	1 hour	1.0
Older Adults and Behavioral Health Issues	1.5 hours	1.5
Psychosocial Issues	1 hour	1.0
Substance Use Disorders and Treatment	1 hour	1.0
About Trauma-Informed Care	1 hour	1.0
Understanding Mental Illness	30 min	0.50
Medication Management for Unlicensed Med Techs (Professionals)		
Be There: People Come First	1 hour	1.0
Documenting Medications	1 hour	1.0
Falls in Assisted Living	1 hour	1.0
Introduction to Person-Centered Care in Assisted Living	1 hour	1.0
Providing Medication Assistance	1 hour	1.0
Safely Monitoring the Medication	1 hour	1.0
Quality of Life for Older Adults		
Assessing and Managing Pain	1 hour	1.0
Creating Quality of Life in Dementia Care	2.5 hours	2.5
Aging and Sexuality: For LTC Professionals	1.5 hours	1.5
Exercise and Fall Prevention in Seniors	1 hour	1.0
Health Insurance Portability and Accountability Act and Client Rights	1 hour	1.0
Let's Get Real: Being Person-Centered in a Task Oriented World	1 hour	1.0
Managing Nutritional Status - Malnutrition and Dehydration	1 hour	1.0
Palliative vs. Hospice Care	1.25 hours	1.25
Encouraging Client Independence	1 hour	1.0
Sexuality and Persons with Dementia	30 min	0.5



SUGGESTED TRAINING PLANS

Basic Care Skills for Family Caregivers	<u>Duration</u>	<u>CEUs</u>
Assisting with Bathing	15 min	0.25
Assisting with Dressing	30 min	0.5
Basic Care Skills - Pain	5 min	0
Basic Care Skills - Privacy	2 min	0
Basic Care Skills - Range of Motion	3 min	0
Basic Care Skills - Skin Care	5 min	0
Basic Cleaning in the Home	30 min	0
Basics of Hand Hygiene	15 min	0.25
Giving a Complete Bed Bath	15 min	0.25
Oral Hygiene: Assisting with Brushing and Flossing	15 min	0.25
Providing Denture Care	15 min	0.25
Providing Nail and Foot Care	15 min	0.25